

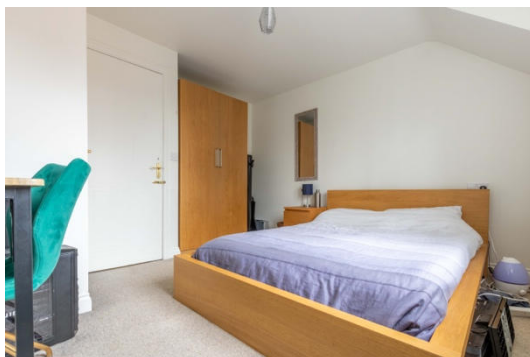


Paul Pieri

Staniland Court Monthly Rental Of £560

Abingdon,  
Oxfordshire OX14 1QZ





## Abingdon

Monthly Rental Of £560 (room let)

Double room located in the top floor of this three story shared house. The room benefits from a bed with new mattress and will be redecorated on vacation with the current tenants, there is also built in storage/wardrobe. The room benefits from sole use of an adjacent bathroom and residents have the use of the shared first floor sitting room, ground floor WC and kitchen facilities. There is a garden for use by all residents at the rear of the property and there is allocated parking available for residents use on a first come first serve basis. Available from 1st April.

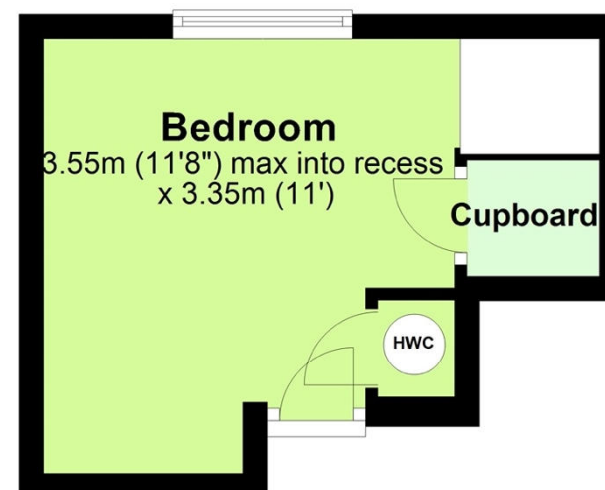
Paul Pieri Estate Agents Limited. Registered in England and Wales. Registered Number 10485522.  
Registered address Maple Suite, 10-12 High Street, Hungerford, Berkshire, United Kingdom, RG17 0DN. Directors:  
Paul Pieri & Lorna Pieri

Whilst every attempt has been made to ensure the accuracy of the floor plans contained here, measurements of doors, windows and rooms are approximate and no responsibility is taken for any error, omission or mis-statement. These plans are for representation purposes only as defined by RICS Code of Measuring Practice and should be used as such by any prospective purchaser. The services, systems and appliances listed in this specification have not been tested by Paul Pieri Estate Agents Limited and no guarantee as to their operating ability or their efficiency can be given.

- AVAILABLE 1 APRIL 2021
- Second floor double room let
- Adjacent bathroom
- Shared garden, sitting room, and kitchen facilities
- Cul-de-sac location.

## Second Floor

Approx. 11.9 sq. metres (128.6 sq. feet)



Total area: approx. 11.9 sq. metres (128.6 sq. feet)

Every attempt has been made to ensure the accuracy of this floor plan. Measurements of doors, windows and rooms are approximate for indicative purposes only. No responsibility is taken for any error, omission, or misstatement. Specifically, no guarantee is given on the total square footage of the property if provided and figures are given for guidance purposes only and must not be relied on as a basis of valuation.  
Plan produced using PlanUp.

For more information or to arrange a viewing please contact:

**Wantage**  
3b Newbury Street  
Wantage  
Oxfordshire, OX12 8BU

**Sales**  
Tel 01235 763611  
Email sales@paulpieri.co.uk  
Web www.paulpieri.co.uk

